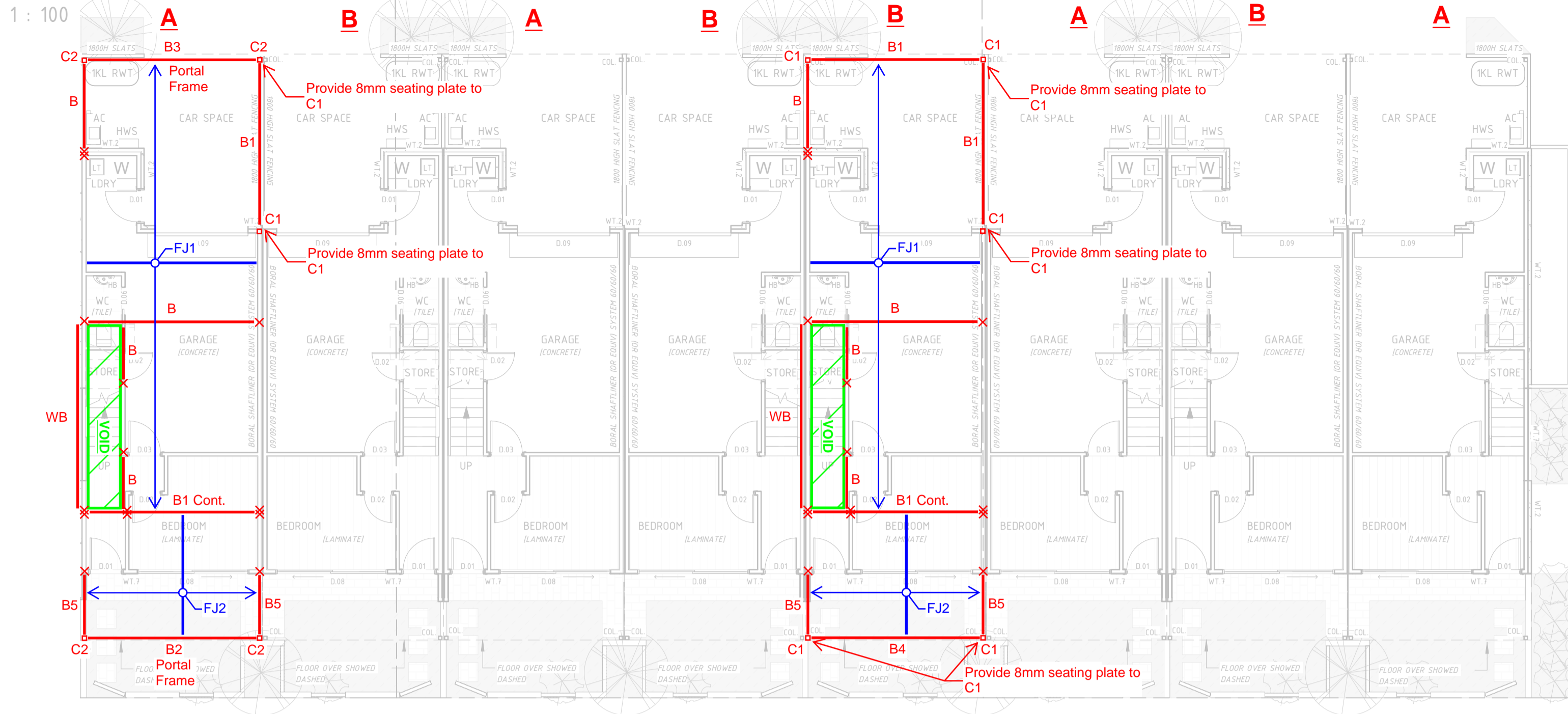


1 FIRST FLOOR LAYOUT



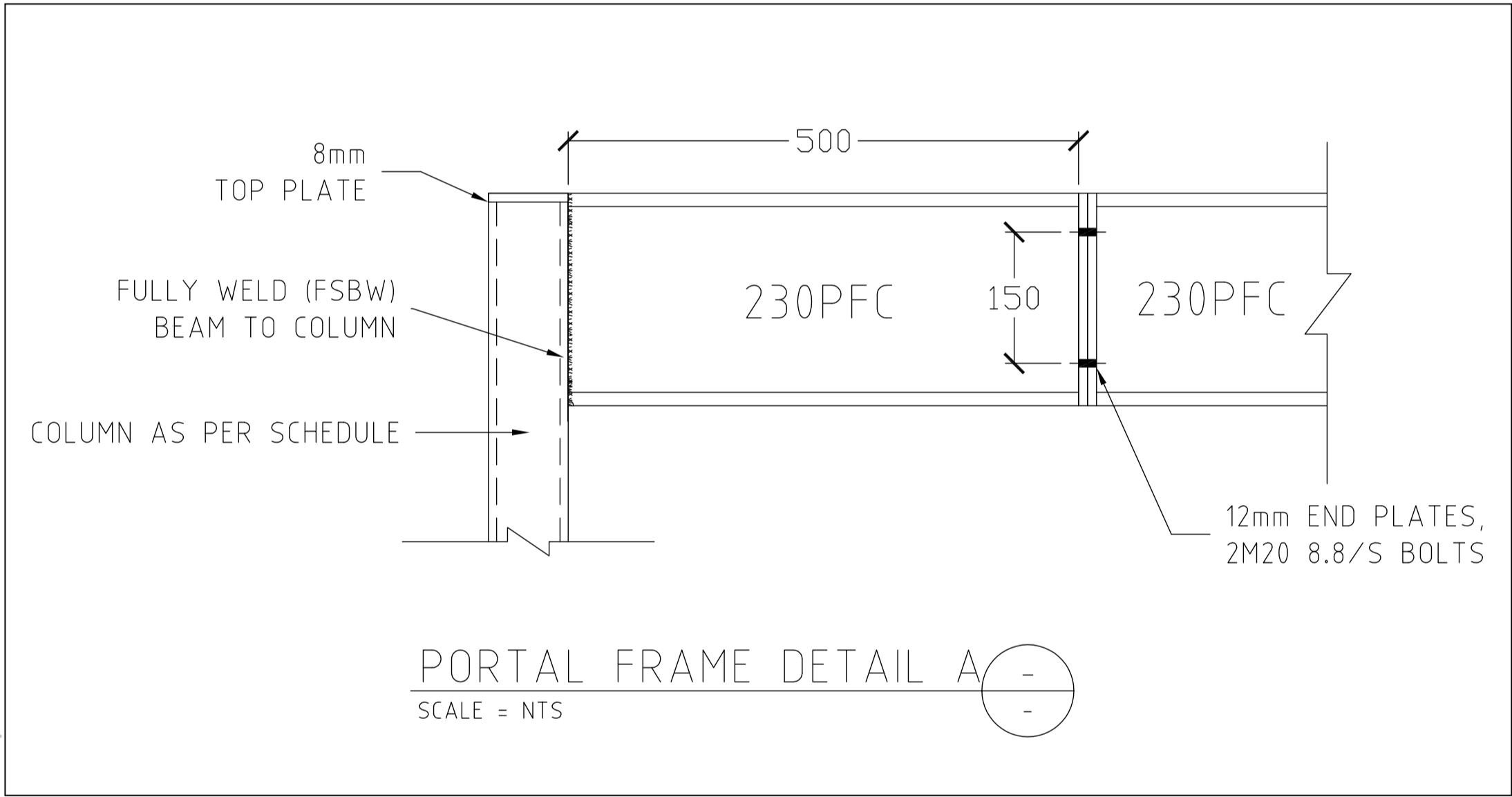
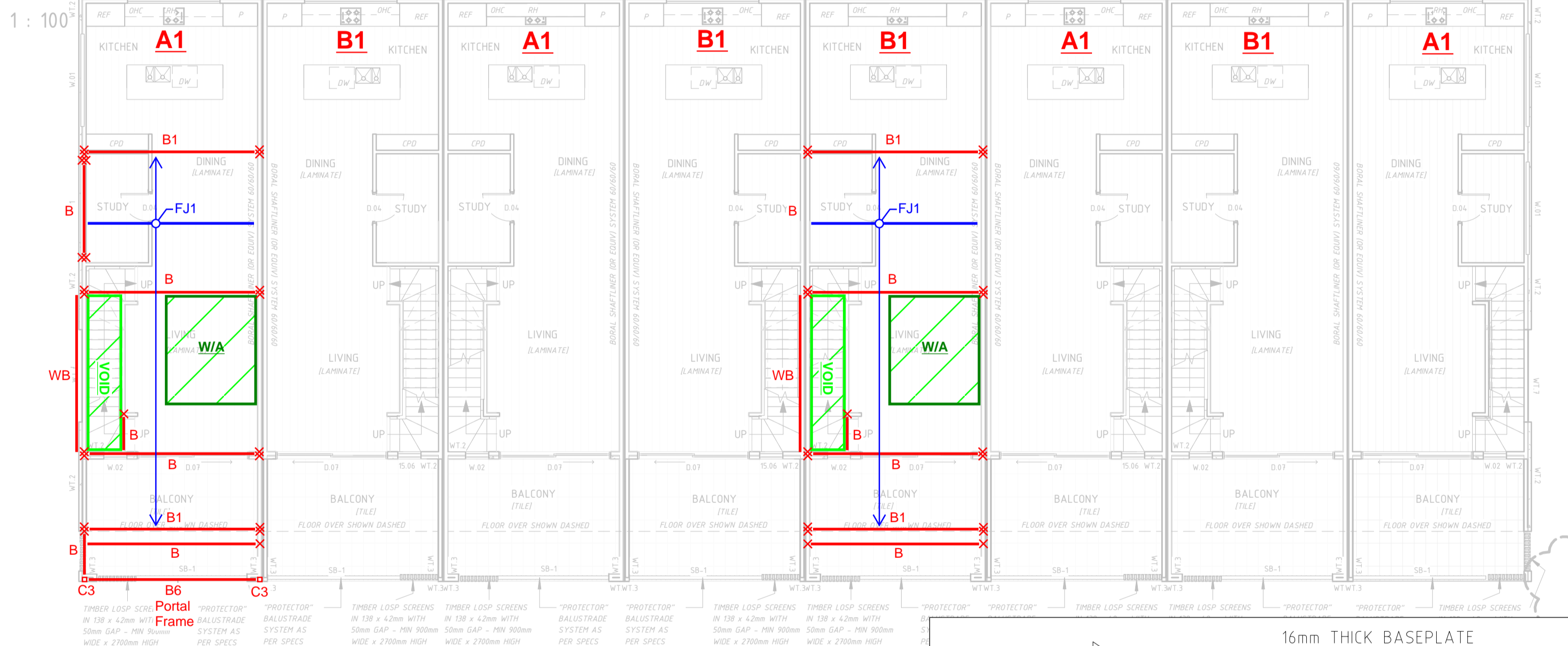
MEMBER SCHEDULE

FJ1	TSF4575 @ 600 CRS
	TSF4075 @ 450 CRS BELOW WET AREAS
FJ2	TSF3575 @ 450 CRS

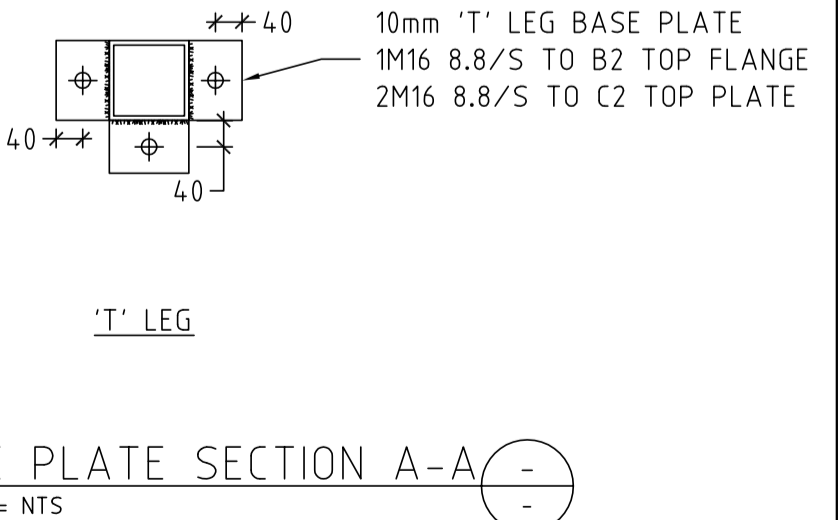
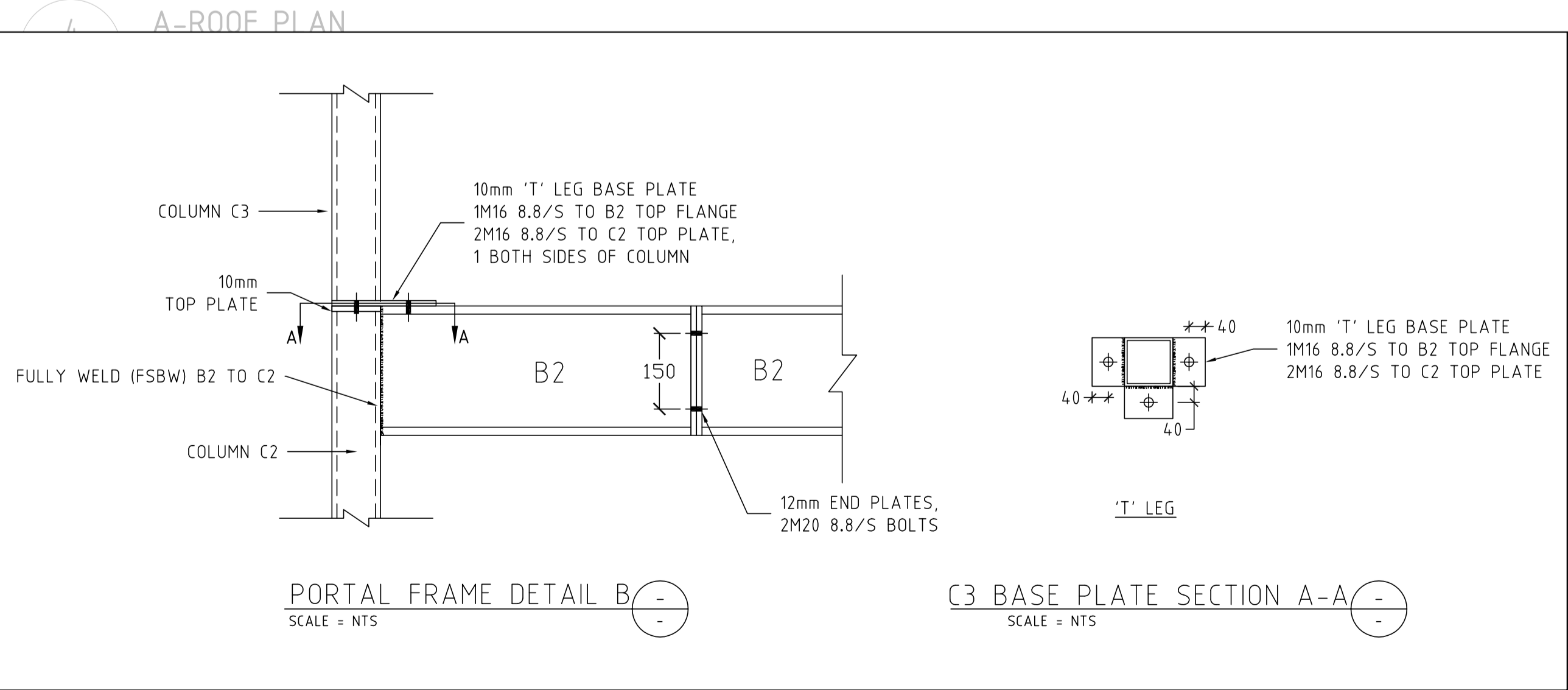
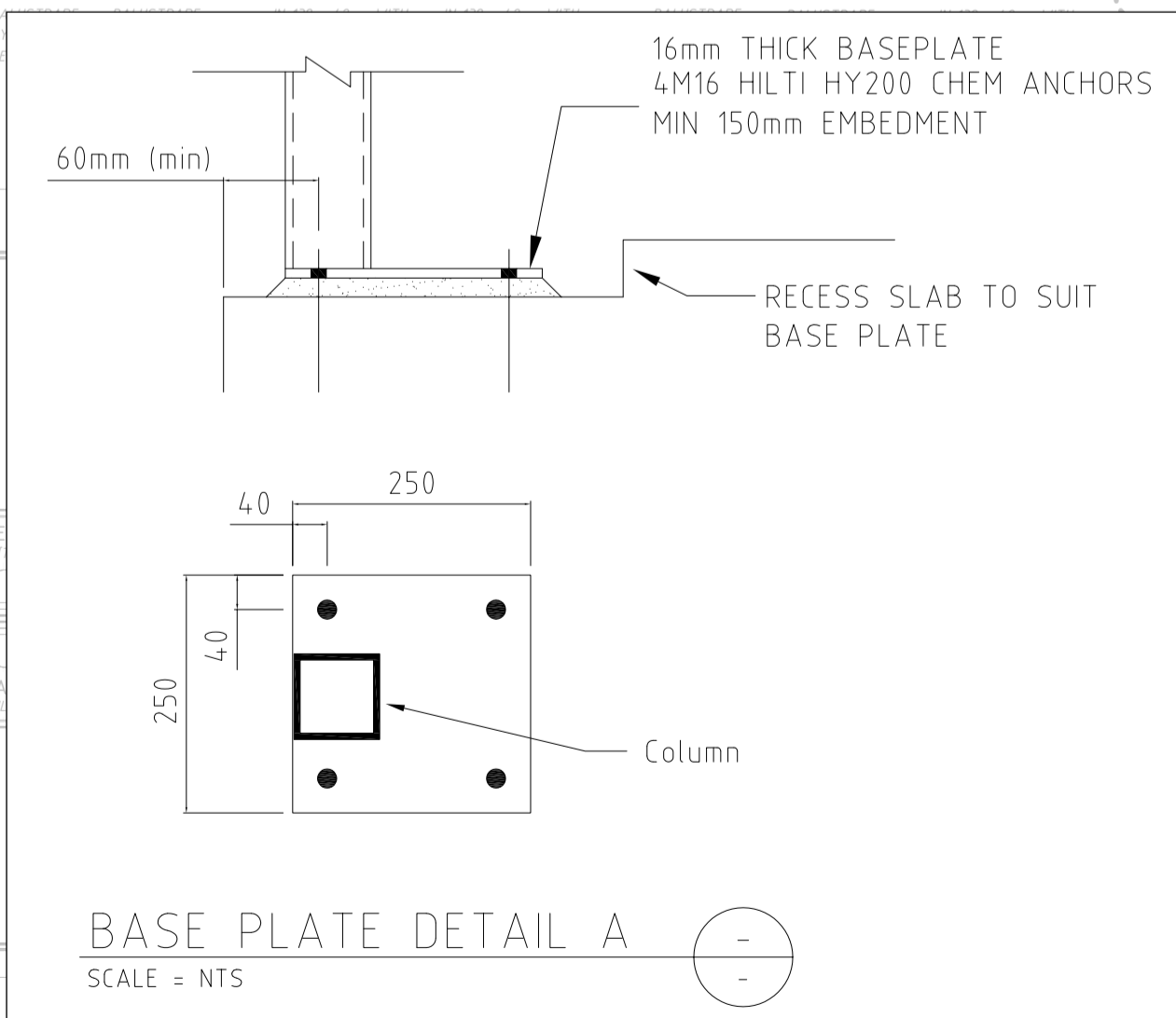
**GINOS ENGINEERS PTY LTD**  
CONSULTING ENGINEERS  
6/04/2020 38642

B	TSF4510
B1	2/TSF4510 (BOXED CHORDS) - SK10
B2	230 PFC (REFER TO PORTAL FRAME DETAIL B)
B3,B6	230 PFC (REFER TO PORTAL FRAME DETAIL A)
B4	2/TSF3510 (BOXED CHORDS) - SK10
B5	TSF3510 (BOXED CHORDS)
WB	89x89x5.0 RHS
C1	89x89x3.5 SHS (C350-10mm BASE PL., 2M16 HILTI HY200 CHEM ANCHORS)
C2	89x89x6.0 SHS (C350-16mm 250 SQ. BASE PL., 4M16 HILTI HY200 CHEM ANCHORS)
	- REFER TO BASE PLATE DETAIL A
C3	89x89x6.0 SHS (C350-10mm BASE PL., 3M16 8.8/S)
	- REFER TO PORTAL FRAME DETAIL B / C3 BASE PLATE SECTION A-A
x	BOXED STUD
xx	DOUBLE BOXED STUD

2 SECOND FLOOR LAYOUT



Notes:  
1. Layouts for each dwellings according to labels  
A, B, A1 or B1



REVISIONS

ISSUE #	DATE	DESCRIPTION
PD3	05/11/2019	ISSUE FOR PLANNING VARIATION TO COUNCIL
PD4	05/02/2020	RESPONSE TO REFERRALS FROM COUNCIL

PROJECT ADDRESS  
82 - 90 JOHNS ROAD, PROSPECT SA  
5082

CLIENT  
82 JOHNS ROAD PTY LTD



SHEET  
FLOOR PLANS

WD.A.102

AUTHOR  
GB  
CURRENT REVISION  
RESPONSE TO REFERRALS FROM COUNCIL

ISSUE DATE  
17/03/2020  
NOT FOR CONSTRUCTION

